

Steffa Hamat

Fam. Walser
A-6562 Mathon
Kirchgasse 6
Tirol - Österreich
info@saffretta.at
www.saffretta.at
Tel.: 0043-(0)664/500 56 47



STEFFA HAMAT – a different way to spend your holidays!

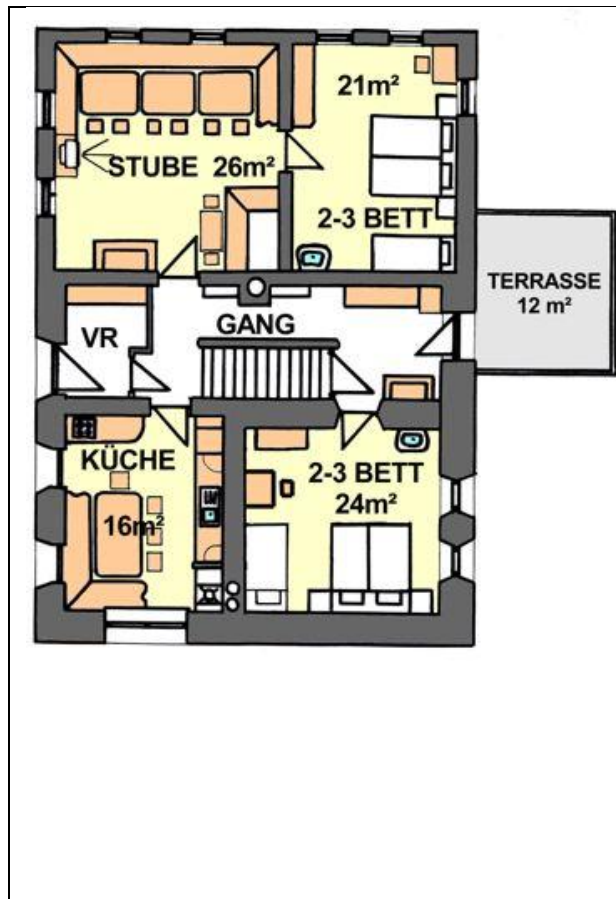
cosy, comfortable, in the heart of nature Holidays in a 300 year old farmhouse - tastefully refurbished.

Welcome!

Dreaming of a romantic holiday in a small house in the snowy mountains? Why not rent an old house situated on the outskirts of the Mathon village (district of Ischgl) which perfectly combines all of today's amenities and old style? We have put much love and effort into the refurbishment of our farmhouse which is about 300 years old. One of our main goals was to keep the rooms in their original states as far as possible. Except for the furniture the living room and all bedrooms have remained unchanged. Only the kitchen, the bathroom and the heating room have been renewed to meet modern needs. Of course all beds have been adapted to conform to today's standard sizes (90/200 cm). In the course of the refurbishment works all windows have been exchanged, a central heating (800-litre boiler- oil firing) has been installed and all electrical installations have been renewed.

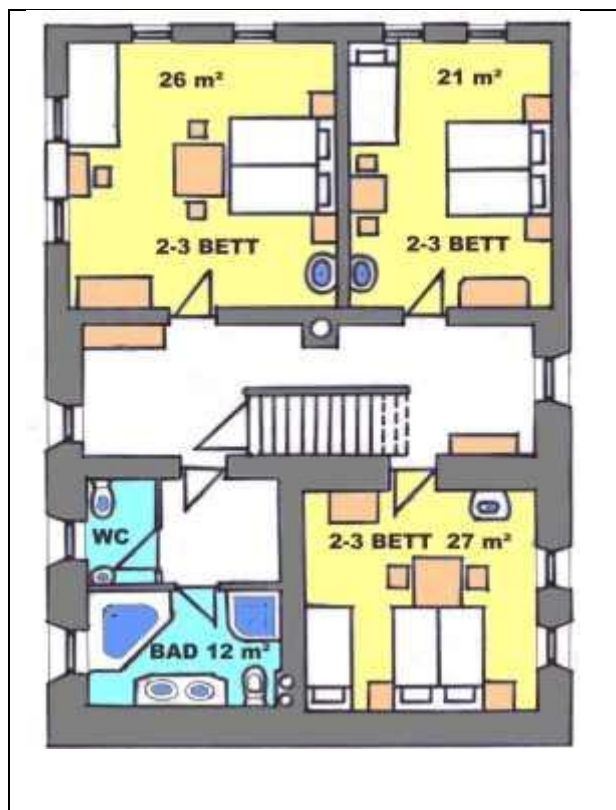
The house has 5 spacious bedrooms with a total of 10 up to 15 beds. The living room with a tiled stove and three solid wood tables provides a particularly comfortable atmosphere. The tables can also be arranged to form a large dinner table where family and friends can come together.

If you decide to stay in this old house you shouldn't be bothered by the creaking of the deal boards or the low ceilings and door sizes which are typical of a 300 year old house. It is exactly these features that give the house its romantic character.



GROUND FLOOR

Kitchen	16 m ² Table to seat 6 persons kitchenette (stove with baking oven dishwasher, refrigerator, freezer) microwave oven
Living room	26 m ² 3 wooden tables to seat about 15 persons tiled stove (wood) TV-set (with satellite) chest of drawers (old)
Nebenstube bedroom	21 m ² 1 double bed, 1 single bed (standard size 90x200) 1 wash basin 1 fitted wardrobe 1 table
Knechtskammer bedroom	24 m ² 1 double bed, 1 single bed (standard size 90x200) 1 wash basin 1 fitted wardrobe 1 table
Sun terrace	12 m ² sun/view-protected



UPPER FLOOR.

Bath	12 m ² Corner bath tub shower double wash basin with mirrored cabinet
WC	WC with wash basin
Stubenkammer bedroom	26 m ² 1 double bed, 1 single bed (standard size 90x200) 1 wash basin 1 wardrobe (old) 1 dresser 1 table
Nebenstubenkammer bedroom	27 m ² 1 double bed, 1 single bed (standard size 90x200) 1 wash basin 1 fitted wardrobe 1 table
Mägdekammer bedroom	21 m ² 1 double bed, 1 single bed (standard size 90x200) 1 wash basin 1 wardrobe (old) 1 table

STEFFA HAMAT a different way to spend your holidays
Tastefully refurbished! cosy comfortable in the heart of nature

